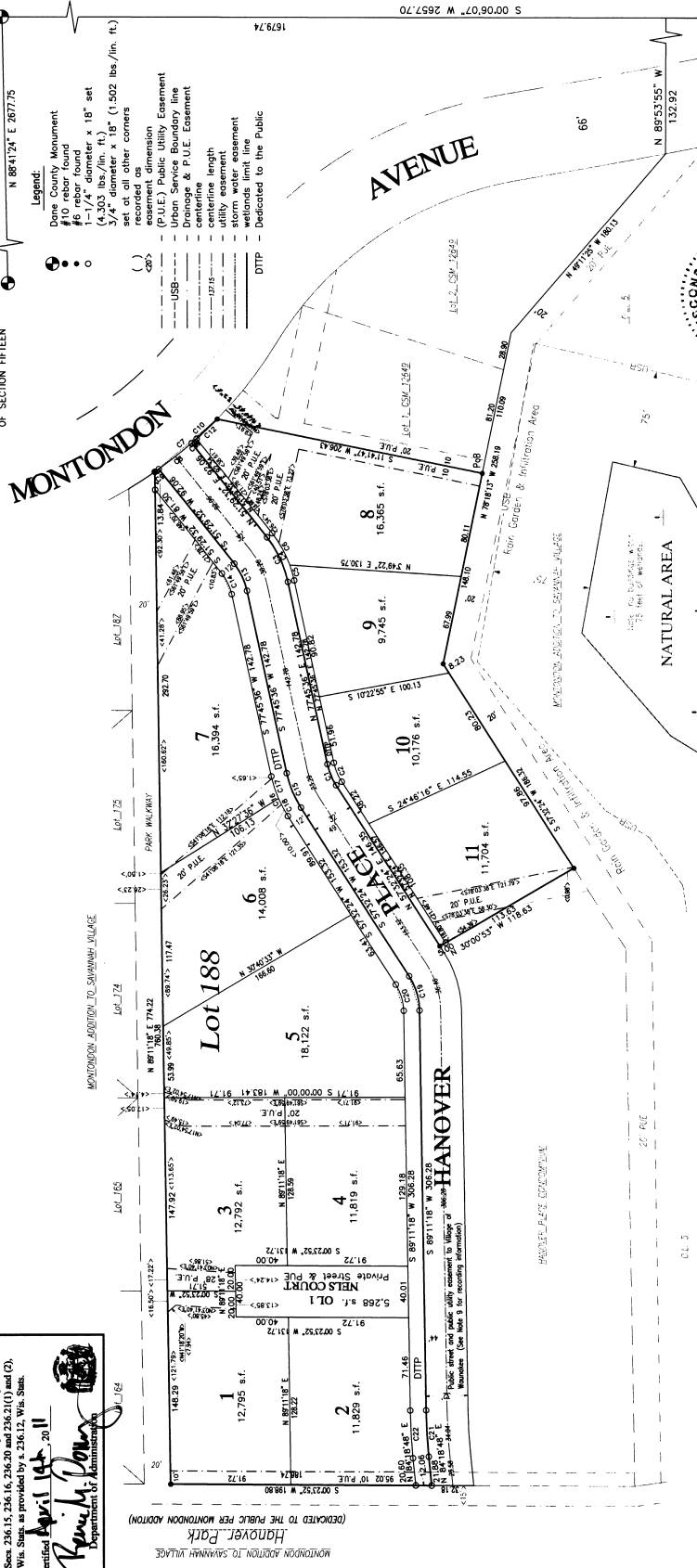
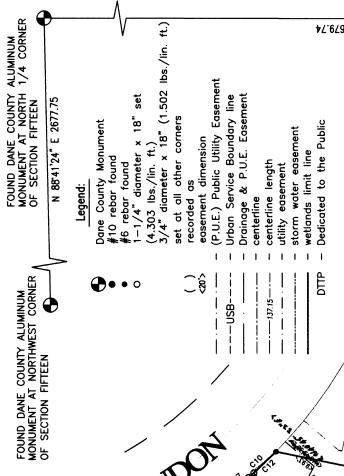


HANOVER ADDITION TO SAVANNAH VILLAGE

Being a replat of part of Lot 188, Montondon Addition to Savannah Village, located in the NE 1/4 and the SE 1/4 of the NW 1/4, Section 15, T 8 N, R 9 E, Village of Waunakee, Dane County, Wisconsin.

There are no objections to this plat with respect to
Secs. 236.15, 236.16, 236.20 and 236.21(1) and (2),
Wis. Stats. as provided by s. 236.12, Wis. Stats.
Certified: *April 14, 2011*
Kevin J. Dwyer
Department of Administration

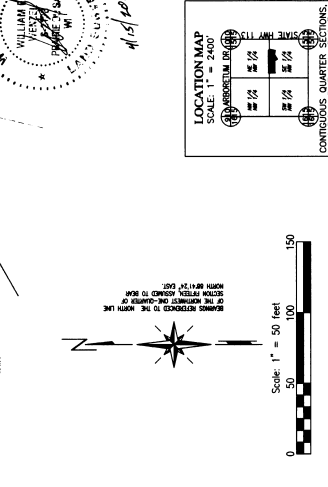


CL 3

NO.	DELTA <	RADIUS	CHORD BEARING	CHORD	ARC TANGENT BEARING
C1	207.1312°	50.00	S 67°59'00" W	17.55	17.65
C2	207.1312°	45.00	S 67°59'00" W	15.80	15.85
C3	207.1312°	40.00	S 67°59'00" W	14.05	14.10
C4	207.1312°	35.00	S 67°59'00" W	12.30	12.35
C5	07°55'08"	87.00	N 73°48'02" E	12.01	12.02
C6	18°20'56"	87.00	N 60°40'00" E	27.74	27.86
C7	10°43'05"	333.00	S 60°30'13" E	62.20	62.29
C8	05°30'29"	333.00	S 38°50'28" E	32.00	32.01
C9	00°36'33"	333.00	S 35°45'57" E	3.54	3.54
C10	00°36'33"	333.00	S 35°45'57" E	3.54	3.54
C11	00°51'42"	333.00	S 41°14'34" E	5.01	5.01
C12	03°44'21"	333.00	S 43°59'35" E	21.73	21.73
C13	26°16'04"	50.00	N 64°37'34" E	22.72	22.92
C14	26°16'04"	38.00	N 64°37'34" E	17.27	17.42
C15	207.1312°	82.00	S 67°59'00" W	28.79	28.94
C16	70°15'56"	94.00	S 72°53'37" W	33.80	33.83
C17	02°15'56"	94.00	S 62°13'02" W	15.33	15.35
C18	09°21'16"	84.00	N 73°21'51" E	27.27	27.62
C19	31°38'54"	38.00	N 73°21'51" E	20.72	20.99
C20	31°38'54"	416.00	S 86°45'03" W	35.38	35.40
C21	04°52'30"	428.00	S 86°45'03" W	36.41	36.42

GENERAL NOTES

- All exterior boundary dimensions are to the nearest one-hundredth of a foot. All Bearings are true.
- All utility facilities in this plat are to be installed underground. All easements on this plat are for public utility purposes unless otherwise noted.
- UTILITY EASEMENTS: No poles, pedestals, or buried cables are to be installed in such a manner that their placement would disturb a survey monument; nor obstruct visibility along all lines.
- This plat shall only affect drainage rights, including ditches, and natural drainage ways on lots without the written consent of the Village Board of Waunakee.
- Vertical Datum refers to Mean Sea Level, 1929 MAD.
- All lots in this plat are to be served by public sanitary sewer and water services.
- All lots in this plat are zoned Planned Unit Development (P.U.D.). Therefore setbacks and other zoning requirements shall be determined by the Village Board of Waunakee. Specific implementation plan to be submitted for this plat.
- Refer to the engineering plans for soil information.
- Public street and public utility easement to Village of Waunakee per Document number



Project: HANOVER ADDITION TO SAVANNAH VILLAGE
Scale: 1" = 50'
Drawn By: WJS
Approved By: WJS
Date: January 17, 2011
Revised: April 13, 2011

ORION LAND SURVEYORS
290 Fifth Street
Plymouth, WI 53078
(608) 643-8951

Received for Record April 15, 2011 at 3:51 o'clock
of Plat # 59-0883
of Plats on pages 410-411
Kevin J. Dwyer, Register
Kath Calhoun, Register

